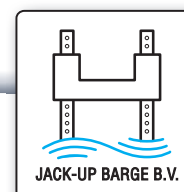
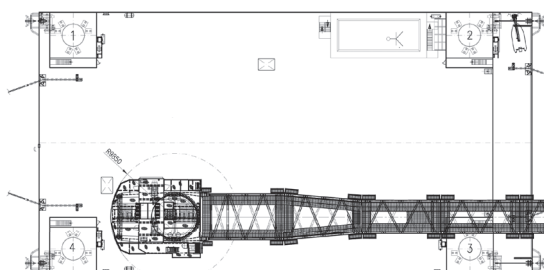


# JB-118



# JB-118



### General

Type	MSC SEA-3250
Make/Yard	CMHI, China (2013)
Class	A.B.S. A1 Self Elevating Unit
Name	JB-118

### Main Dimensions

Length	75.90 metre
Breadth	40.00 metre
Depth	6.00 metre
Draft maximum	3.90 metre
Leg length	90.00 metre
Leg diameter	3.50 metre
Deck area	2,500 m <sup>2</sup>

### Jacking System

Make	MSC type 3250
Jacking speed up	15 mtr/hour
Jacking speed down	18 mtr/hour
Maximum pay load	2,250 tons

### Mooring system

Winches	4 x 40 tons line pull
Anchors	4 x Delta Flippe, 6.5 tons

### Crane

Make	Favco Cranes, Malaysia
Type	PC 1000 Offshore crane
Capacity	1000 tons at 22 mtr 800 tons at 28 mtr 500 tons at 43 mtr 220 tons at 76 mtr
Maximum boom length	98 metre

### Heli Deck

Capacity	Super Puma
----------	------------

### Operation Conditions

Maximum water depth	± 45 metre
Wave height/period	3.72 metre/8.0 sec.
Wind speed	20 metre/sec.

### Survival Conditions (Based on 45 metre water depth)

Maximum wave/height/period	15.0 metre/12.5 sec. (air gap 13.5 m.)
Wind speed	39.0 metre/sec.

### Optionals

Accommodations units up to 350 persons incl. all facilities	
Dynamic Positioning System	DP2 Kongsberg Portable Thruster System
Drilling equipment	
Pile driving equipment	

**Jack-Up Barge B.V.**

**Krausstraat 14-16, 3364 AD Sliedrecht, The Netherlands**

**Phone: +31 (0)184 42 00 91 Fax: +31 (0)184 41 95 96**

**E-mail: info@jackupbarge.com**

**[www.jackupbarge.com](http://www.jackupbarge.com)**