

Star Insurance

Star Information Systems AS (SIS) provides fleet management software for ships and rigs. SIS is a company created by pioneers in the field of fleet management who have been instrumental in the industry since 1967. Since SIS's inception in 1997 we have seen strong growth and today our world-wide network of subsidiaries and agents forms the basis of our customer support.

The SIS systems cover all areas of fleet management including:

- Maintenance
- Dockings
- Spares and inventory
- Purchasing- including electronic commerce
- Safety Management
- Insurance
- and more...

All modules are independent yet can also form a completely integrated system. The SIS software is uniquely designed to make it easier to learn for the people onboard and easier to maintain for the head office.

The software is used onboard and in the office: Coordination occurs through our robust, secure and cost effective data replication engine or on-line features.

The aim of the SIS systems is to improve efficiency and profits through:

- Improved maintenance and condition control
- Manage and follow-up audits, non-conformities, incidents, and near-misses
- Cross fleet comparisons
- Efficient data replication
- Reduced operational costs
- Tighter budget and cost control
- Optimized inventory use
- Efficient purchasing processes
- Reduced risk exposure and reduced insurance premiums

With the Star system managers can be assured of meeting the requirements within their own company and of external parties such as classification societies, national administrations and international organizations.

A dynamic, credible and professional partner for our customers.

Insurance, policies and claims



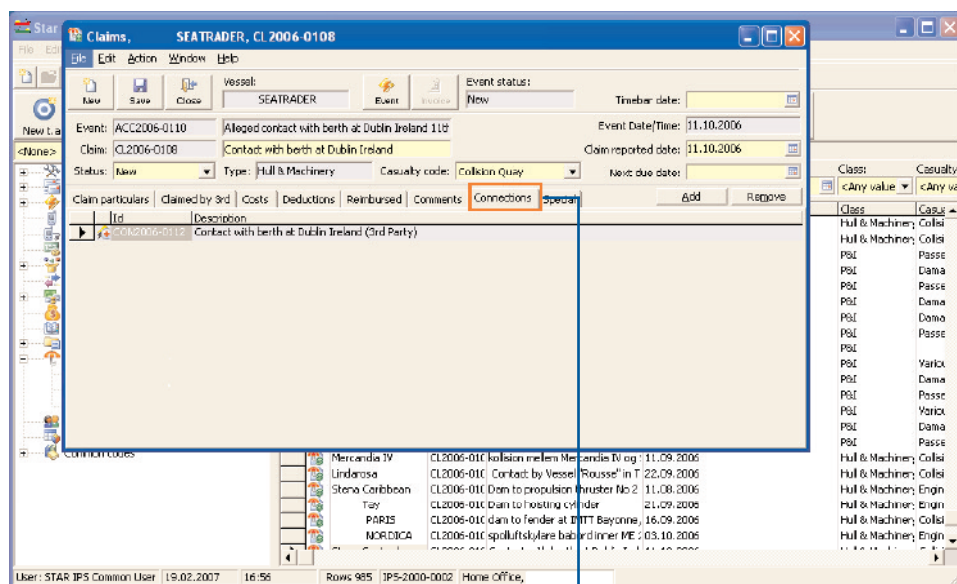
When it comes to Insurance you don't have a choice: You have to get organized and stay organized.

Star Insurance is the tool that allows you to easily keep track of all information related to policies and claims. It handles every type of insurance policy a shipping or offshore company has including: health, travel, terminals, H&M, P&I, FDD, cargo and COFR.

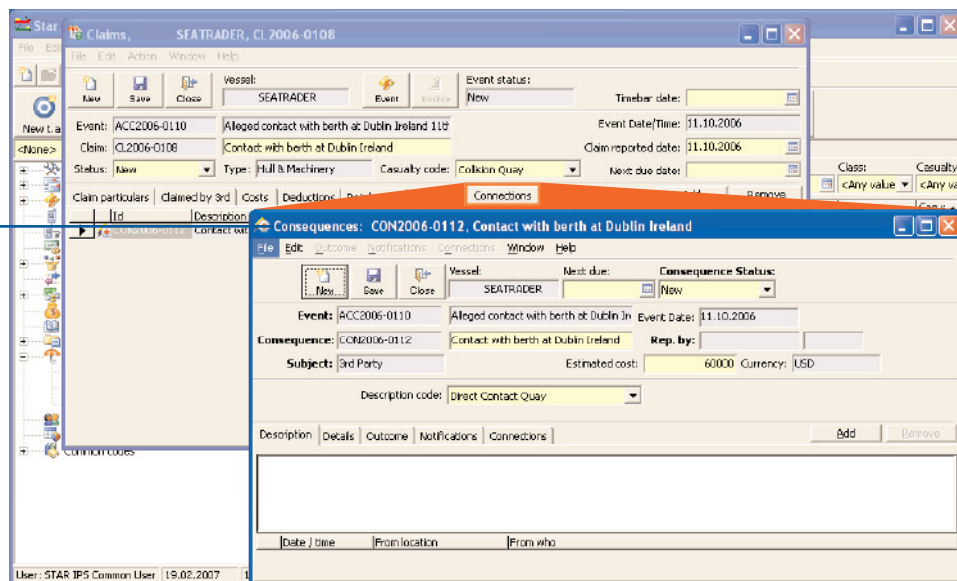
Star Insurance can be a "stand-alone" program or be fully integrated into STAR IPS, either way it shares Star IPS's easy-to-learn, easy-to-use interface.

Owner	Id	Description	Date occurred	Class	Causality
Star Saga	02000-000	Dam to hull	30.10.2000	Hull & Machine	Collision
Common Boatic	02000-000	Foreign parts in lubrication system	25.01.2001	Hull & Machine	Engine
Discovery	02000-000	Dem to lower section	25.01.2001	Hull & Machine	Heel
Star Challenger	02000-000	Breakdown turbo charger	20.03.2001	Hull & Machine	Engine
Tiver	02000-000	Damage to S100 propulsion gear	14.03.2001	Hull & Machine	Engine
Star Freighter	02000-000	Vessel was sinking stocked on qu	19.03.2001	Hull & Machine	Collision
Star Lynx II	02000-000	Credited crankcase main engine	27.03.2001	Hull & Machine	Engine
Star Condair	02000-000		05.05.2001	P&I	Collision
Star Jutlandia	02000-000	Car contaminated with hydraulic	01.06.2001	P&I	Pass
Star Congress	02000-000	Struck by Eagle Atlantic	14.06.2001	Hull & Machine	Collision
Star Germania	02000-000	Passenger Lida Kronsk-Slo and 1	24.07.2001	P&I	Pass
Star Sandhveit	02000-000	Trailer P&I H&M killed	23.03.2001	P&I	Demo
Star Sandhveit	02000-000	Graffiti on 2 boats/air H&M 223	20.06.2001	P&I	Demo
Star Saga	02000-000	German mobile home REG-PW-05	09.06.2001	P&I	Demo
Star Jutlandia	02000-000	Electric fault (general cargo) car	25.06.2001	P&I	Demo
Star Seaside	02000-000	Contract with busy	13.06.2001	Hull & Machine	Collision
Star Carline	02000-000	Wash damage	20.07.2001	P&I	Wash
Star Carline	02000-000	Wash damage	21.08.2001	P&I	Wash
Star Carline	02000-000	Removal lamp Yulu L 10 leave	16.08.2001	P&I	Demo
Star Clipper	02000-000	Contract with an under water obj	20.06.2001	Hull & Machine	Collision
Star Carline	02000-000	Cargo damage	30.07.2001	P&I	Pass

Star Insurance



When Star Insurance is integrated into STAR IPS "connections" can be made. These "connections" link: Events-Claims-Consequences, and all documents, video clips etc. Giving Star Insurance the ability to leverage all the information in STAR IPS. Linking Star Insurance to the onboard module means that available information will become more accurate and timely



Star Insurance makes it easy to follow up claim estimates, settlements, and costs and reporting capabilities are second to none. You have the option of using STAR's standard reports or ordering "tailor made" reports for your company. Either way you can get excellent statistical and other reports automatically from your database.

Integration with other Star Systems

Star Insurance can be used as a stand-alone program or may form part of the integrated Star Information and Planning System (Star IPS). Star IPS has modules for safety, documents, work planning, docking, crew, budgeting, material and purchase and the messaging capability. (Please refer to the Star IPS brochure for more information)

Data exchange is guaranteed by Star's superlative replication engine.

Technical Data

Star Insurance can be run on Windows 2000/NT/XP/Vista workstations. The program uses SQL databases like Oracle and MS SQLServer.

For more detailed information please contact sales@sismarine.com / tel: +47 22 47 69 10

Sales Office

Stortorvet 5
NO-0155 Oslo, Norway
Tel: +47 22 47 69 10
Fax: +47 22 47 69 19
sales@sismarine.com

Norway · Singapore · The Netherlands · Denmark · Brazil · Australia · Dubai · Canada · UK



Star Information Systems AS

www.sismarine.com