



Star Project: Repair, conversion, and dry-dock

Dry-dock and repair projects are the largest periodic maintenance activities a vessel is exposed to during its life cycle. Star Project is a purpose-built solution for management of ship repair, conversion and dry-dock projects, allowing ship owners and managers to increase efficiency and reduce cost in fleet maintenance projects.

Creating dry-dock specifications can be a time consuming task. Star Project is designed to streamline this process by making it easier to include documents and data from various sources into the specification. Star Project integrates with Microsoft Project to offer a complete project management tool.

Project planning

Star Project enables ship managers to identify repair items, make reliable repair plans and generate accurate specifications, hence reducing the share of extra work required for each dry-dock project.

Quote comparison

Star Project allows for systematic quote comparison in order to find the best supplier. Quotations are electronically imported or manually entered into the system, and can be compared item-by-item or in a pre-defined setup. Contract and data entry can be standardized to ensure repair agreements comply with industry regulations.

History and reporting

Star Projects enables storage of project history. When the project is finished, all data will be filed in the history of the project account and each individual item is filed for later use. Star Project is designed to report work done into the Star Maintenance module, and data from the system can also be used for KPI's and reporting.

User friendly

Star Project's graphical user interface facilitates easy learning, understanding and usage. Wizards and terminology used in the system can be configured to match company and industry standards.

Use Star Project to:

- Create repair list
- Generate repair specifications
- Request for quotes
- Receive and compare quotes
- Award contracts
- Follow-up on progress and costs
- Handle change orders and extras
- Settle with yard
- Report work done
- Replicate data between vessel and office



Replication

Star Project can be used as a stand-alone solution or in interaction with an office based hub for fleet management. Data from the vessel is replicated to the hub using SIS' highly reliable replication engine. When used in the office, Star Project provides a full overview of fleet maintenance projects, including detailed information for each vessel and project. Project routines and instructions can be updated and distributed to multiple vessels, and internal messaging and notifications facilitate for knowledge sharing.

Illustrated below: Quotations can be imported or entered into the system, allowing for comparison item-by-item or in a pre-defined setup.

Compare quotes: SPIC2006-0100

File Window Help

Close Print Contract

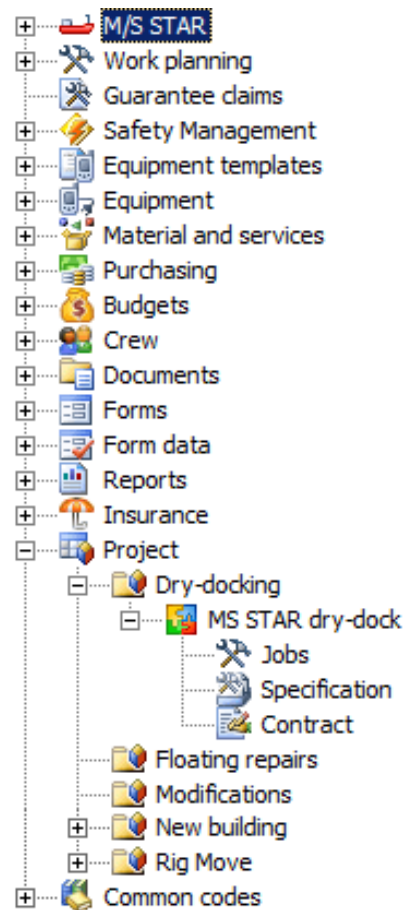
Show details Show jobs already on contract Show all prices in: European Currency/Us

Show totals

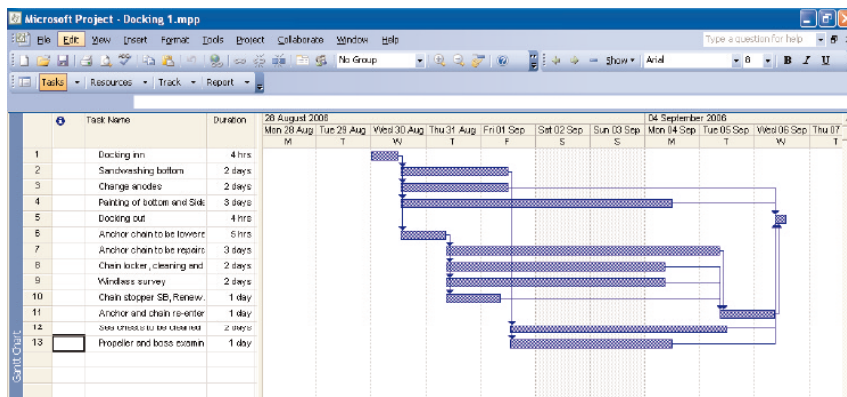
Totals		Actual Marine S	Bedford Ship & M	MAN - B&W Norge	Sch
Cost elements	Estimate	0.00			
+ Jobs on contract			129,370.54	113,092.13	111,207.26
- Discount on total %					
- Lump sum/reduction					
+ Additional costs					
+ Estimated add. %					
= Totalsum			129,370.54	113,092.13	111,207.26

Job	Unit prices	General services	Additional costs						
<input type="checkbox"/> 271.001	+	2006-0008	Sandblasting and re-coating	Estimated Price	Net price	Net price	Net price	Net price	Net price
				0.00	50,529.92	50,240.82		65,675.85	
<input checked="" type="checkbox"/> 278.001	+	2006-0005	Inspect, clean/replace anodes	0.00	4,283.79	5,140.55		4,797.85	
<input checked="" type="checkbox"/> 481.001	+	2006-0006	Inspect rudder, check/replace anodes	0.00	27,416.27	20,562.20		17,991.93	
<input type="checkbox"/> 631.001	+	2006-0007	Measure surface roughness	0.00	5,140.55	5,140.55		2,741.83	

Fin. acc	Fin. acc description	Cost item	Cost item description	Disc %	Net price	Disc %	Net price	Disc %	Net price
1530	Spare parts	1	Only spare parts/ material		1,891.87		2,141.90		1,943.17
4520	Repair & maintenance	3	Total price		2,141.90		2,570.20		2,998.92
1530	Dredging	2	Only non-hours		257.03		425.38		656.76



Illustrated below: Star Project integrates with Microsoft Project to offer efficient project planning. Microsoft Project screen dump reprinted with permission from Microsoft Corporation.



Integration with other systems

Star Project can be used as a stand-alone solution or may form part of the integrated Star Information and Planning System (please refer to the Star IPS brochure for more information). Star Project integrates with the Star modules for Maintenance, Purchasing, Documents, and Budgets.

Technical Data

Star Project can be run on Windows XP/Vista/7 workstations. The program uses SQL databases such as Oracle and MS SQL Server.

For more information please contact:

Star Information Systems
 Tel: +47 22 47 69 10
 E-mail: sales@sismarine.com
 www.sismarine.com

MirTac BV (The Netherlands)
 Tel: +31 (0) 162 406460
 E-mail: info@mirtac.nl
 www.mirtac.nl



Star Information Systems